

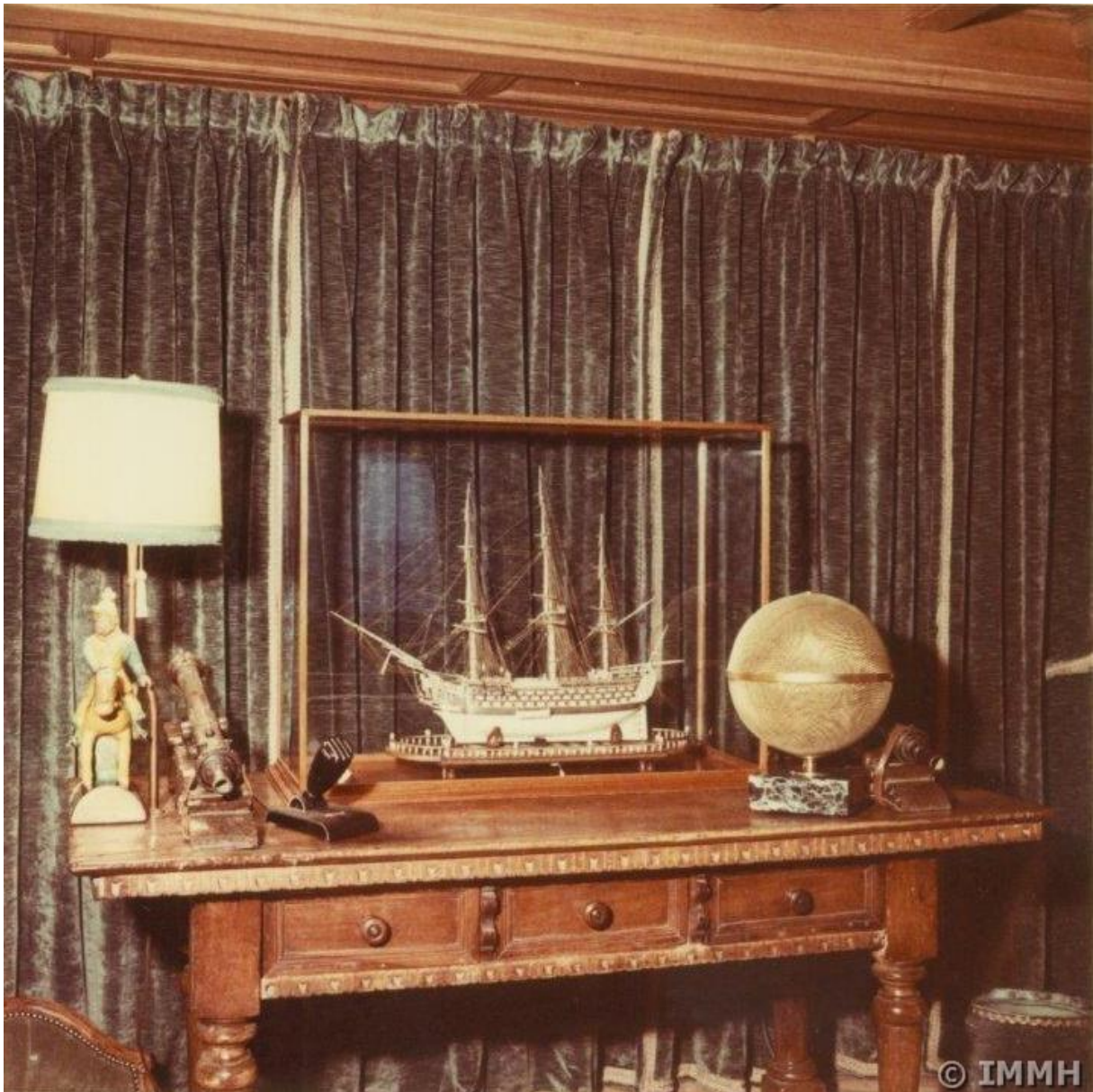
## **Prisoner of War Bone Ship models on board the Onassis yacht 'Christina'**

Ship models made of bone or wood [late 18th – early 19th century] by French war prisoners in England. They were placed in special showcases along the staircase leading to the guest cabins in the yacht 'Christina'.

The ship models are now in the 'Alexander S. Onassis Foundation collection, and in the Hellenic Maritime Museum collection. The photos below were provided for this website, courtesy International Maritime Museum, Hamburg (IMMH).



Showcases along the staircase



Bone ship in the saloon of 'Christina' (this model is now in the Alexander S. Onassis Foundation collection)

#### Literature

Aristotle Onassis – Beyond his Myth. Catalogue published on the occasion of the exhibition 'Aristotle Onassis: Beyond his Myth', organized at the Benaki Museum – Pireos Street Annex, October 5 – November 12, 2006. 207 pages, ISBN ARIONA S.A.: 960-89403-1-1, ISBN Benaki Museum: 960-8347-44-0